



Northwood Healthcare

# Rehabilitation Outcomes Summary Report

Cindy Spears admitted to Buckeye Terrace Rehabilitation and Nursing Center on March 24, 2025 under the care of Lyle Olson. During the course of the stay, Occupational Therapy, Physical Therapy, and Speech Therapy were initiated to efficiently and effectively identify Cindy Spears's unique needs and tailor specialized treatment plans to successfully transition to the next level of care.

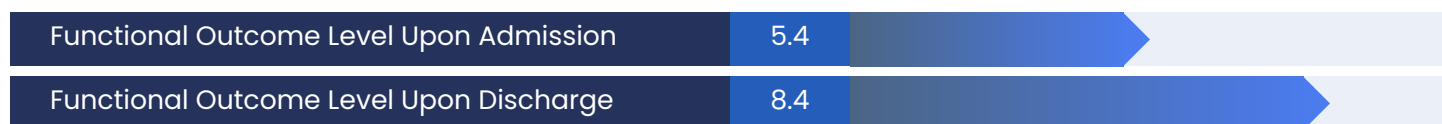
The therapy team provided skilled interventions to address the adaptation, compensation, and restoration potential of Cindy Spears and coordinated with the interdisciplinary team to ensure appropriate clinical care areas were addressed. On May 10, 2025, Cindy Spears successfully discharged to other.

The rehabilitation length of stay was 48 days.

## Overall Composite Score Outcomes

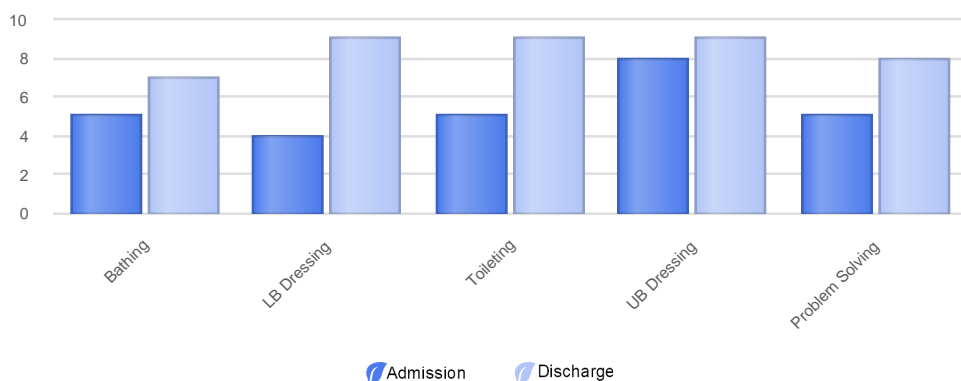
Rehabilitation outcomes are assessed on a 10-point rating scale. 10 is the most independent level of ability, and 1 is the most dependent level of ability. A score of 0 may represent an inability to perform the task. The Model 10 Composite Score represents Cindy Spears's overall outcomes.

### Model 10 Composite Score Overview



## Rehabilitation Outcomes Details

**Model 10**<sup>3.0</sup>  
ADAPTATION > COMPENSATION > RESTORATION



Thank you for the opportunity to care for Cindy Spears.